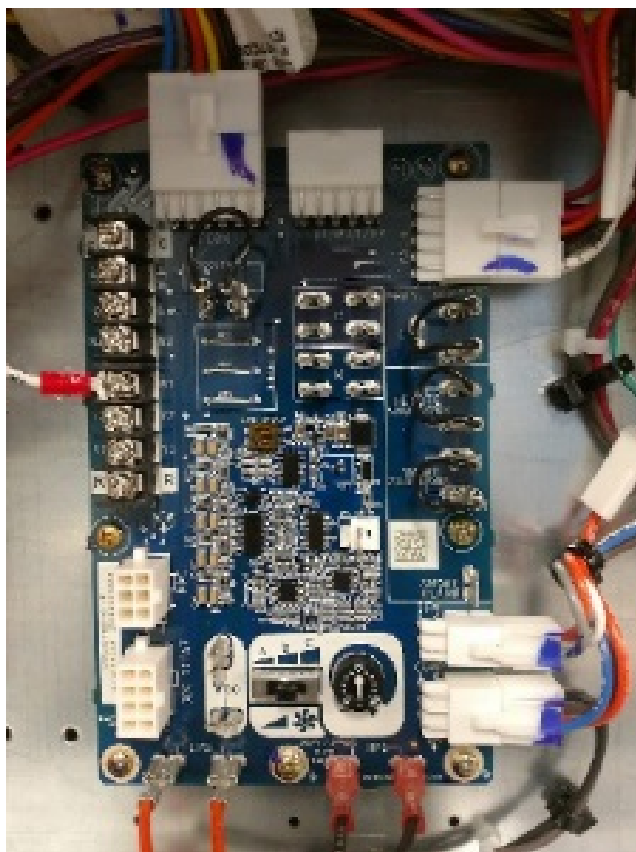


INSTRUCTIONS FOR INSTALLING CAMBRIDGEPORT ECONOMIZER
#1022355 OR #1023736 INTO CARRIER MODEL 48/50GC 04-06,
48/50FC 04-07 WHICH CONTAIN THE NEW UNIT CONTROL BOARD
(UCB)



IF YOUR UNIT DOES NOT HAVE THE UCB BOARD PICTURED
ABOVE, PLEASE REFER TO OUR STANDARD ECONOMIZER
INSTALLATION AND OPERATION MANUAL

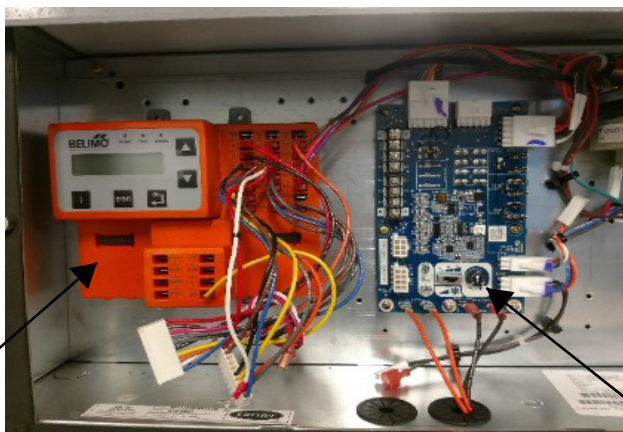
STEP 1: MOUNT CONTROLLER

FOR THIS INSTALLATION YOU WILL NEED THE #48TC003198 ADAPTER HARNESS THAT SHIPPED IN THE CONTROL CABINET OF THE UNIT, AND THE #9800555 ADAPTER HARNESS LOCATED IN THE ECONOMIZER HARDWARE BAG. THE #48TC003199 WILL NOT BE USED, AND SHOULD BE LEFT IN THE CONTROL CABINET OF THE UNIT.

MOUNT THE BELIMO ZIP CONTROLLER INSIDE ELECTRICAL PANEL OF THE RTU USING SUPPLIED #10 SELF-TAPPING SCREWS.



48TC003198



ZIP MODULE

UNIT CONTROL BOARD (UCB)



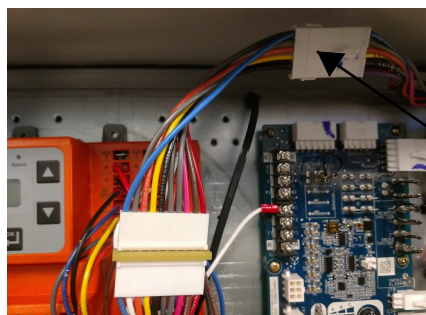
9800555

STEP 2: HARNESS

CONNECT THE END OF THE WHITE "W1" WIRE HANGING FROM THE ZIP CONTROLLER TO THE "W1" TERMINAL ON THE UNIT CONTROL BOARD (UCB). DISCONNECT FACTORY INSTALLED ECONOMIZER HARNESS FROM THE TOP OF THE UNIT CONTROL BOARD (UCB) AND CONNECT IT TO THE CORRESPONDING END OF ADAPTER HARNESS #9800555. CONNECT THE OTHER END OF ADAPTER HARNESS #9800555 TO THE 10 PIN (10-WIRE) HARNESS FROM THE ZIP CONTROLLER.

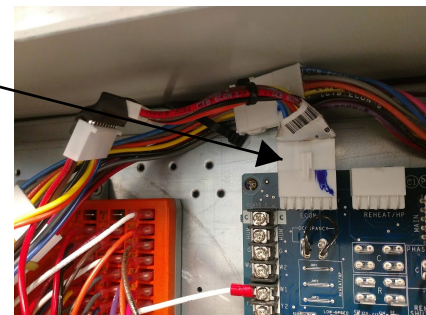
CONNECT THE MALE END OF ADAPTER HARNESS #48TC003198 TO THE TOP OF THE UNIT CONTROL BOARD (UCB) WHERE THE PREVIOUS HARNESS WAS JUST REMOVED. CONNECT THE MALE PIN END OF ADAPTER HARNESS #48TC003198 TO THE 10 PIN (7-WIRE) HARNESS FROM THE ZIP CONTROLLER.

!!!WIRE COLORS MUST MATCH OR THE UNIT WILL BE DAMAGED!!!



48TC003198

9800555



STEP 3: SUPPLY AIR SENSOR WIRING

LOCATE THE (4) LONG WIRES ATTACHED TO THE BELIMO ZIP CONTROLLER (ORANGE:SAT-, BROWN:SAT+, PURPLE:OAT+, PINK:OAT-) AND ROUTE THEM THROUGH THE KNOCK-OUT IN THE UNIT WALL INTO THE FAN SECTION.

REMOVE THE SUPPLY AIR SENSOR FROM THE ECONOMIZER HARDWARE BAG AND INSTALL IN THE FAN SECTION USING THE PROVIDED SCREWS. ATTACH THE BROWN (SAT+) AND ORANGE (SAT-) WIRES TO THE SUPPLY AIR SENSOR (POLARITY INSENSITIVE). ATTACH THE PURPLE (OAT+) AND THE PINK (OAT-) WIRES TO THE EXISTING PINK AND PURPLE WIRES LOCATED IN THE FAN SECTION WIRING BUNDLE USING THE 6" LONG WHITE JUMPER WIRES PROVIDED IN THE ECONOMIZER HARDWARE BAG.

PROCEED TO THE BELIMO ZIP CONTROLLER SET-UP SECTION OF THE ECONOMIZER INSTALLATION AND OPERATION MANUAL TO SET-UP THE ZIP CONTROLLER AND COMPLETE THE INSTALLATION.

