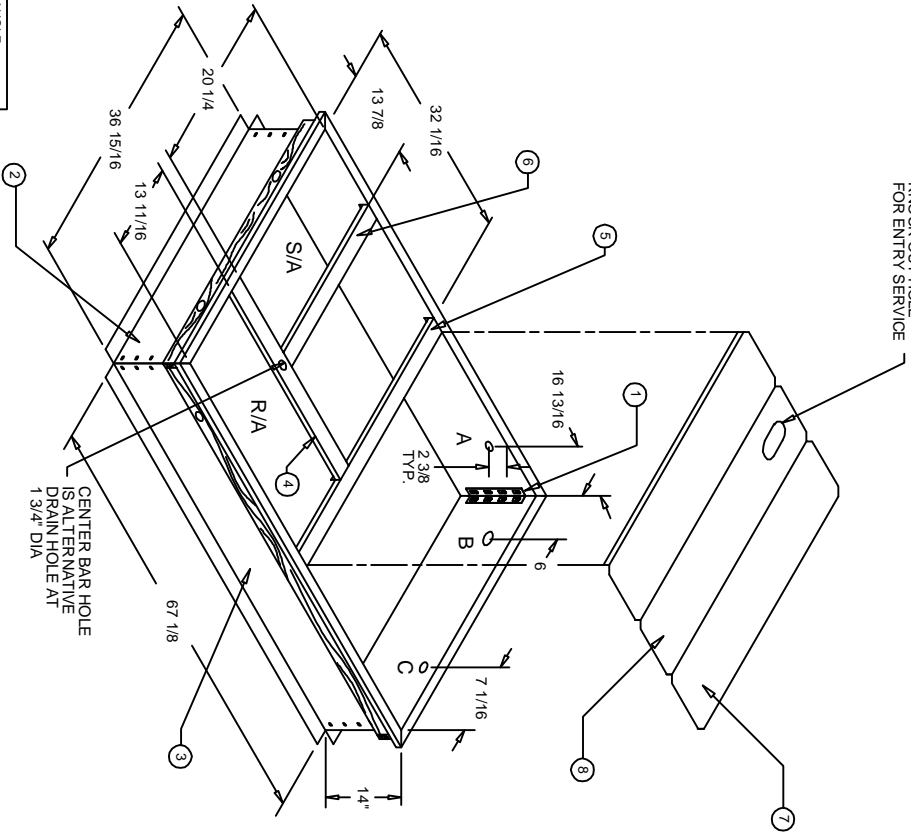


SURE-LOCK ROOF CURB ASSEMBLY INSTRUCTIONS

KNOCK OUT HOLE FOR ENTRY SERVICE



UTILITY HOLE SPECIFICATIONS		
A	B	C
GAS	POWER	CONTROL
2" DIA	2 1/2" DIA	2" DIA

DATE:02-05-01 REV:00

SEE REVERSE SIDE FOR STEP-BY-STEP ASSEMBLY INSTRUCTIONS.

CARRIER UNITS
48/50 DJ,HJ,HM,LJ,QJ,TJ
004-007

BRYANT UNITS
548C, 551A, B 558C, D
580C, D 581A, B 036-072

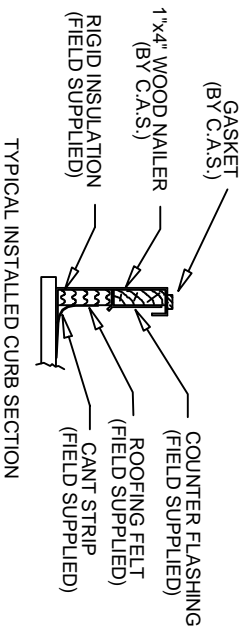
PART NUMBER

CARRIER/BRYANT CAMBRIDGEPORT
CRRFCURB001A00SL 1001617

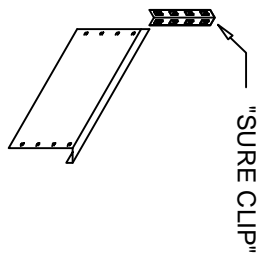
INSULATED

PARTS LIST

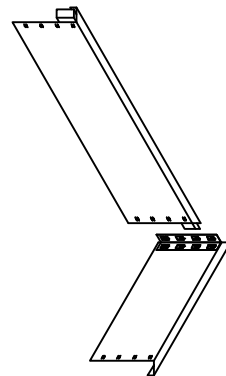
- | | |
|--------------------------|---|
| ① CORNER BRACKET (QTY:4) | ⑦ INSULATED PANELS (QTY:2) |
| ② END RAILS (QTY:2) | ⑧ INSULATED PANEL (QTY:1) WITH UTILITY HOLE |
| ③ SIDE RAILS (QTY:2) | ⑨ HARDWARE BAG (QTY:1) |
| ④ DUCT SUPPORT (QTY:1) | (25) 10-16x3/4" TEK. SCREW |
| ⑤ DUCT SUPPORT (QTY:1) | (1) GASKET 1 1/4" X 1/4" |
| ⑥ DUCT SUPPORT (QTY:1) | (1) INSTRUCTION SHEET |



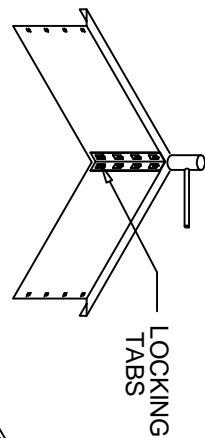
CAMBRIDGEPORT AIR SYSTEMS
SALISBURY, MA 01952
PHONE 1-800-648-2872 FAX 978-462-9189



1 PUT "SURE CLIP" IN RAIL WITHOUT WOOD OVERHANG FIRST. THEN SLIDE CLIP THROUGH KEEPERS ON RAIL 3/4 OF THE WAY. TONGUE SHOULD SLIDE PAST KEEPERS BUT NOT LOCK.

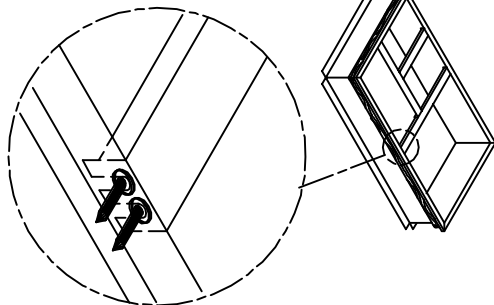


2 ARRANGE SIDE AND END TOGETHER AT RIGHT ANGLES AS SHOWN. CONNECT RAIL WITH WOOD OVERHANG. MAKE SURE TONGUE IS THROUGH KEEPERS BEFORE GENTLY TAPPING REMAINING DISTANCE WITH HAMMER.



(U.S. PATENT)
(# 5465533)

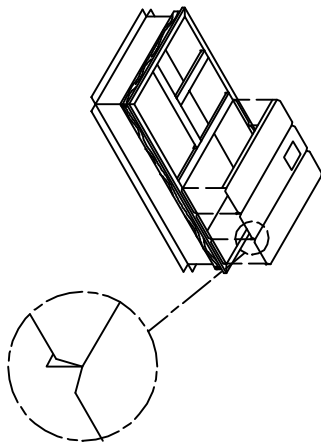
3 SLIDE THE "SURE CLIP" DOWN THE INSIDE CORNER OF THE CURB RAILS, ALLOWING THE "TONGUE" ON THE CLIP TO SLIDE THROUGH THE "KEEPERS" ON THE RAILS. GENTLY TAP THE CLIP THE REMAINING DISTANCE WITH A HAMMER, TIGHTLY LOCKING THE CORNER.



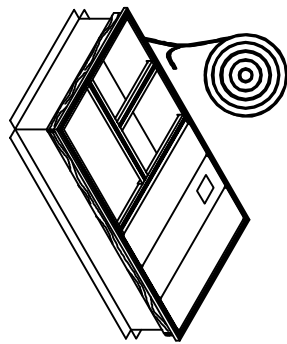
4 PUT 10-16x3/4" TEK SCREWS IN PROVIDED PILOT HOLES IN SIDES AND ENDS WHERE NECESSARY. INSERT SLOTTED ENDS OF DUCT SUPPORTS OVER SCREWS AND TIGHTEN IF NECESSARY. REPEAT AT ALL DUCT SUPPORT LOCATIONS.

NOTE:

ATTACH THE DUCTWORK TO CURB NOT THE UNIT (FLANGES OF DUCT REST ON CURB AND DUCT SUPPORTS).



5 PLACE THE INSULATED PANELS TOGETHER WITH THE FORMED FLANGES FACING DOWN. PLACE PANELS ON SIDE RAILS AS SHOWN, ALLOWING FLANGED PORTION OF PANELS TO REST ON SIDE RAILS. (GASKET WILL HOLD PANELS IN PLACE).



6 REMOVE PAPER BACKING FROM THE PROVIDED GASKETING AND APPLY TO TOP PERIMETER OF ROOF CURB AND DUCT SUPPORTS. (SEE ILLUSTRATION ABOVE). SET CURB IN PLACE OVER ROOF OPENING, LEVEL CURB AND SECURE TO ROOF.

IMPORTANT:

THE GASKETING OF THE UNIT TO THE ROOF CURB IS CRITICAL FOR WATERTIGHTNESS. INSTALL GASKET SUPPLIED WITH ROOF CURB AS SHOWN IN STEP 6. IMPROPERLY APPLIED GASKET CAN RESULT IN AIR LEAKS AND POOR UNIT PERFORMANCE.