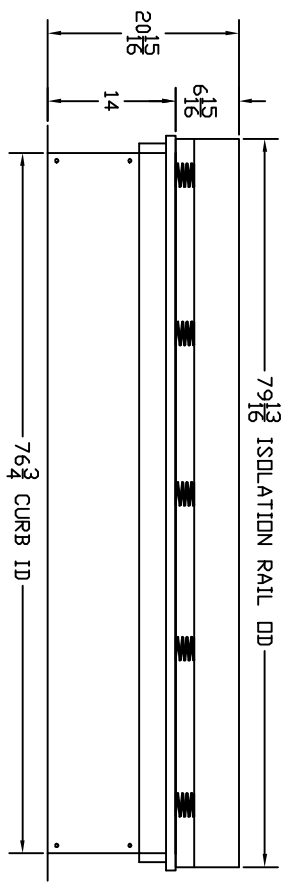
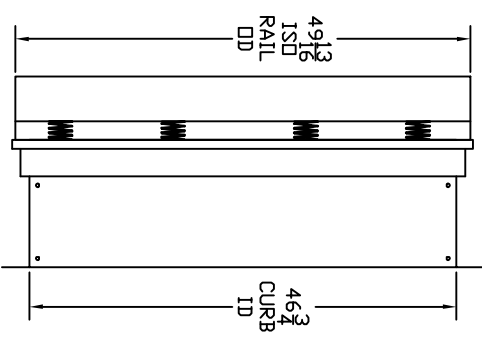
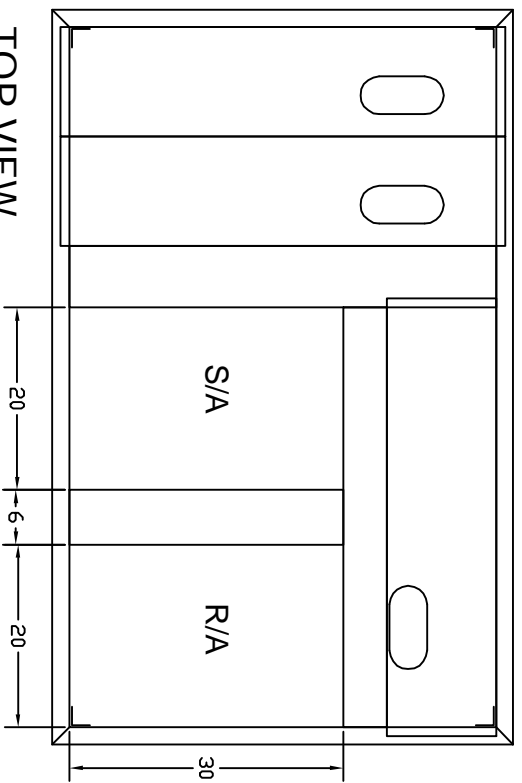


SUBMITTAL



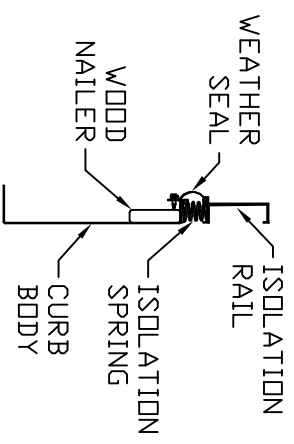
FEATURES:

1. CURB AND ISOLATION RAIL SHIPPED FULLY ASSEMBLED
2. ISOLATION RAIL FABRICATED OF ALUMINUM EXTRUSION
3. CURB FABRICATED OF HEAVY GAUGE GALVANIZED STEEL
4. CURB BODY IS ***** CONSTRUCTION
5. FULL PERIMETER WOOD NAILER
6. FULL PERIMETER WEATHER SEAL
7. DUCT SUPPORT INCLUDED
8. CANVAS DUCT NOT INCLUDED

Approved: _____

Date: _____

NEW UNIT: JCI J10DR
ISOLATION CURB W/2" DEFLECTION



THE INFORMATION CONTAINED IN THIS DOCUMENT IS PROPRIETARY TO CAMBRIDGEPORT AIR SYSTEMS. THIS DOCUMENT MAY NOT BE ISSUED TO ANOTHER PARTY WITHOUT PRIOR WRITTEN CONSENT AND AUTHORIZATION. CAMBRIDGEPORT AIR SYSTEMS AND THE CAMBRIDGEPORT LOGO ARE REGISTERED TRADEMARKS OF CAMBRIDGEPORT AIR SYSTEMS. ALL RIGHTS RESERVED.

TOLERANCES: DECIMALS: .000 = +/- .063, .00 = +/- .063, .0 = +/- .063 ANGLES: +/- 1 DEG FRACTIONS: +/- 1/16"

Cambridgeport TM	
HVAC Accessories & Engineered Systems 1-800-648-2872	
DESCRIPTION	CURB, ISOLATION, JCI J10DR
CUSTOMER/JOB NAME	JCI/ HAVONVYCK
JOB#	DATE
SCALE	PAGE
DRAWN BY	DWG #
CHECKED BY	(CMS #)
	1003529