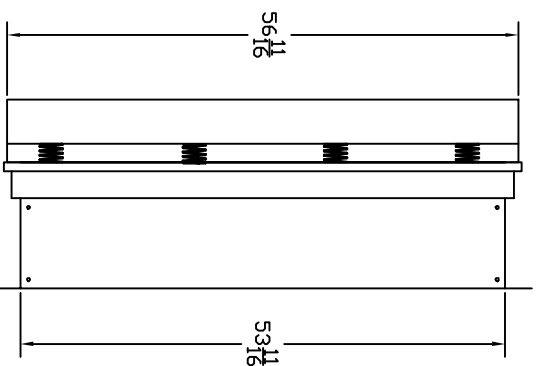
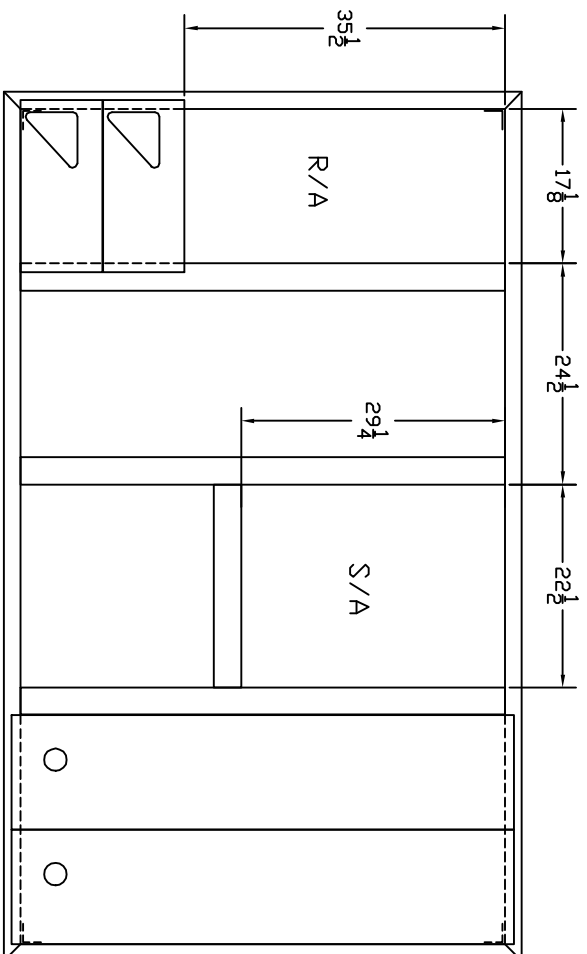
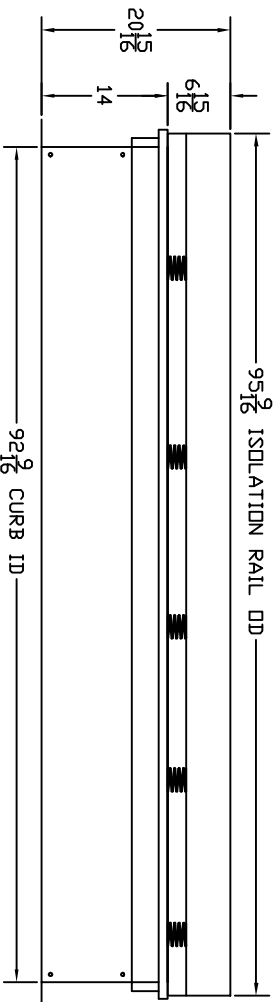


TAG:

TOP VIEW SUBMITTAL



RIGHT VIEW



FEATURES:

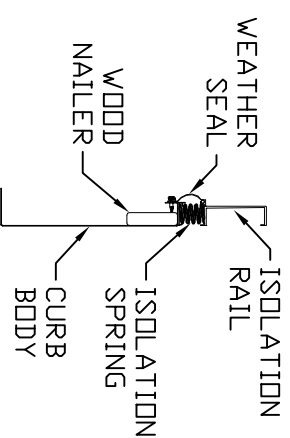
FRONT VIEW

1. CURB AND ISOLATION RAIL SHIPPED ASSEMBLED
2. ISOLATION RAIL FABRICATED OF ALUMINUM EXTRUSION
3. CURB FABRICATED OF HEAVY GAUGE GALVANIZED STEEL
4. MITERED CORNERS
5. FULL PERIMETER WOOD NAILER
6. FULL PERIMETER WEATHER SEAL
7. DUCT SUPPORT INCLUDED
8. CANVAS DUCT NOT INCLUDED

CARRIER: 48PGEC14

ISOLATION CURB WITH 2" DEFLECTION

Approved: _____
 Date: _____



THE INFORMATION CONTAINED IN THIS DOCUMENT IS PROPRIETARY TO CAMBRIDGEPORT AIR SYSTEMS. THIS DOCUMENT MAY NOT BE ISSUED TO ANOTHER PARTY WITHOUT PRIOR WRITTEN CONSENT AND AUTHORIZATION. CAMBRIDGEPORT AIR SYSTEMS AND THE CAMBRIDGEPORT LOGO ARE REGISTERED TRADEMARKS OF CAMBRIDGEPORT AIR SYSTEMS. ALL RIGHTS RESERVED.

TOLERANCES DECIMALS: .000 = +/- .063, .00 = +/- .063, .0 = +/- .063 ANGLES: +/- 1 DEG FRACTIONS: +/- 1/16"

Cambridgeport 1-800-648-2872	
HVAC Accessories & Engineered Systems	
DESCRIPTION	CURB, ISOLATION, CARRIER, 31A
CUSTOMER/JOB NAME	SUBMITTAL
JOB#	DATE 3-23-07
SCALE	PAGE
DRAWN BY JBH	DWG # 1005916
CHECKED BY	CEMS #