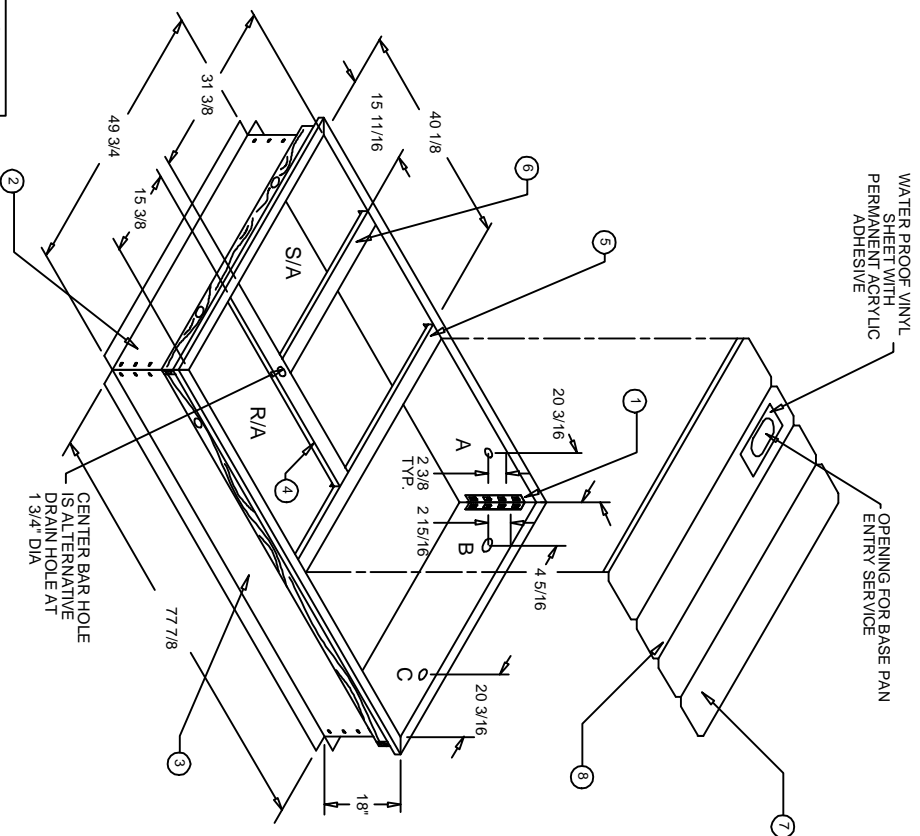


ROOF CURB ASSEMBLY INSTRUCTIONS

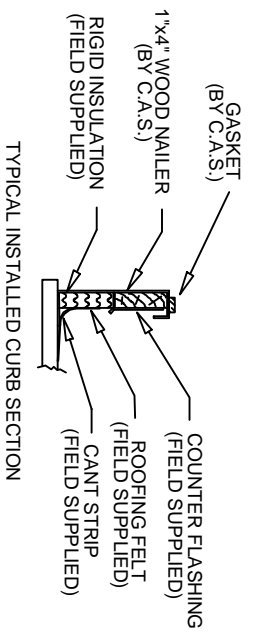


UTILITY HOLE SPECIFICATIONS		
A	B	C
GAS	POWER	CONTROL
2" DIA	3 1/4" DIA	2" DIA

DATE: 12-22-04 REV: 00

SEE REVERSE SIDE FOR STEP-BY-STEP ASSEMBLY INSTRUCTIONS.

- PARTS LIST**
- ① CORNER BRACKET (QTY. 4)
 - ② END RAILS (QTY. 2)
 - ③ SIDE RAILS (QTY. 2)
 - ④ DUCT SUPPORT (QTY. 1)
 - ⑤ DUCT SUPPORT (QTY. 1)
 - ⑥ DUCT SUPPORT (QTY. 1)
 - ⑦ INSULATED PANELS (QTY. 3)
 - ⑧ INSULATED PANEL (QTY. 1) WITH UTILITY HOLE
 - ⑨ HARDWARE BAG (QTY. 1) (25) 10-16x3/4" TEK. SCREW 35 ft. GASKET 1 1/4" X 1/4" (1) INSTRUCTION SHEET



TYPICAL INSTALLED CURB SECTION

CARRIER UNITS
48/50 DJ,HJ,LJ,QJ,TJ
008-014

BRYANT UNITS
548C, 551A, B, 558C, D
580C, D, 581A, B, 090-150

PART NUMBER
CAMBRIDGEPORT
1006182

INSULATED

CAMBRIDGEPORT AIR SYSTEMS
SALISBURY, MA 01952
PHONE 1-800-648-2872 FAX 978-462-9189