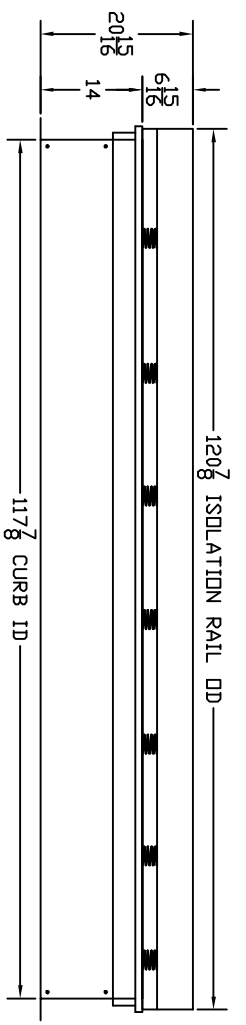
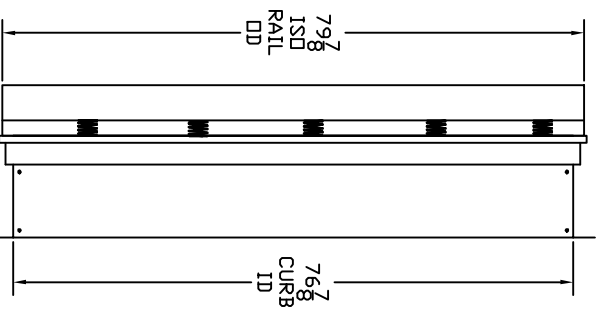
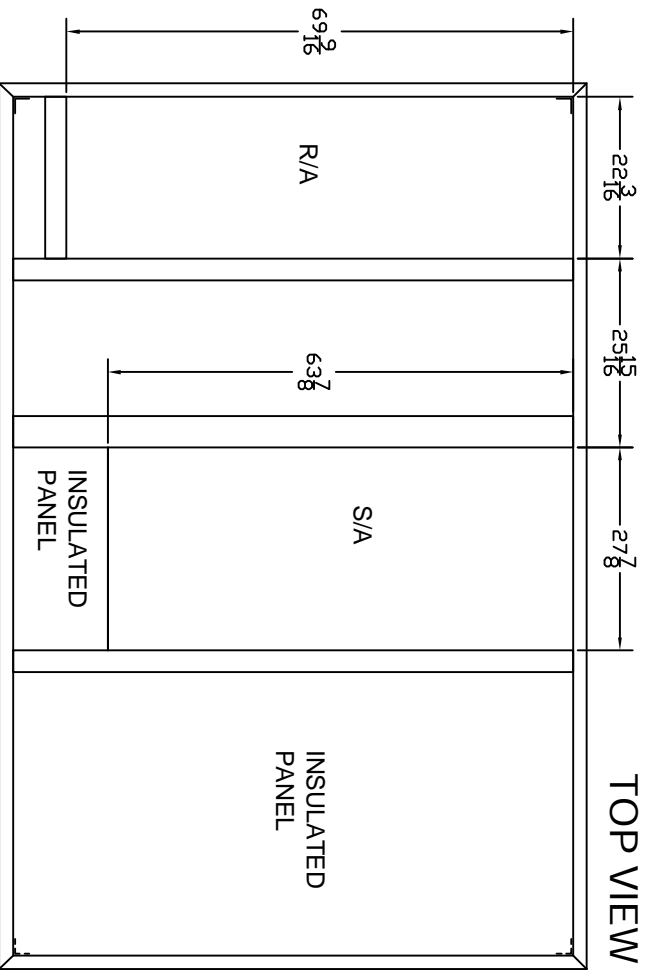


TAG:

# SUBMITTAL

REVISIONS			
REV	ECN #	DESCRIPTION	DATE



FEATURES:

1. CURB AND ISOLATION RAIL SHIPPED ASSEMBLED
2. ISOLATION RAIL FABRICATED OF ALUMINUM EXTRUSION
3. CURB FABRICATED OF HEAVY GAUGE GALVANIZED STEEL
4. MITERED CORNERS
5. FULL PERIMETER WOOD NAILER
6. FULL PERIMETER WEATHER SEAL
7. DUCT SUPPORT INCLUDED
8. CANVAS DUCT NOT INCLUDED

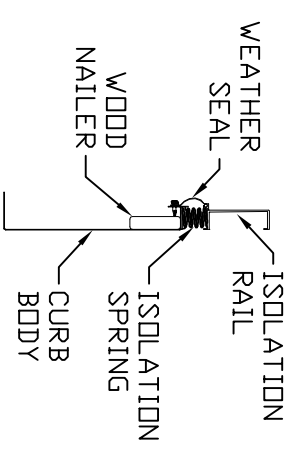
FRONT VIEW

RIGHT VIEW

Approved: \_\_\_\_\_

Date: \_\_\_\_\_

CARRIER UNIT: 48TC17-20  
ISOLATION CURB W/1" DEFLECTION



THE INFORMATION CONTAINED IN THIS DOCUMENT IS PROPRIETARY TO CAMBRIDGEPORT AIR SYSTEMS. THIS DOCUMENT MAY NOT BE ISSUED TO ANOTHER PARTY WITHOUT PRIOR WRITTEN CONSENT AND AUTHORIZATION. \* CAMBRIDGEPORT\* AND THE CAMBRIDGEPORT LOGO ARE REGISTERED TRADEMARKS OF CAMBRIDGEPORT AIR SYSTEMS. ALL RIGHTS RESERVED.  
TOLERANCES: DECIMALS: .000 = +/- .063, .00 = +/- .063, .0 = +/- .063 ANGLES +/- 1 DEG FRACTIONS +/- 1/16"

Cambridgeport™  
1-800-648-2872

HVAC Accessories & Engineered Systems	
DESCRIPTION	CURB, ISOLATION
SUBMITTAL	
CUSTOMER/JOB NAME	
JOB#	
SCALE	PAGE
DRAWN BY	DWG #
CHECKED BY	(CWS #)