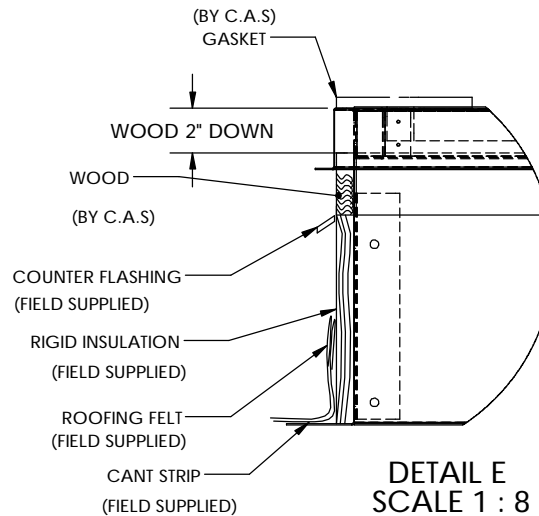
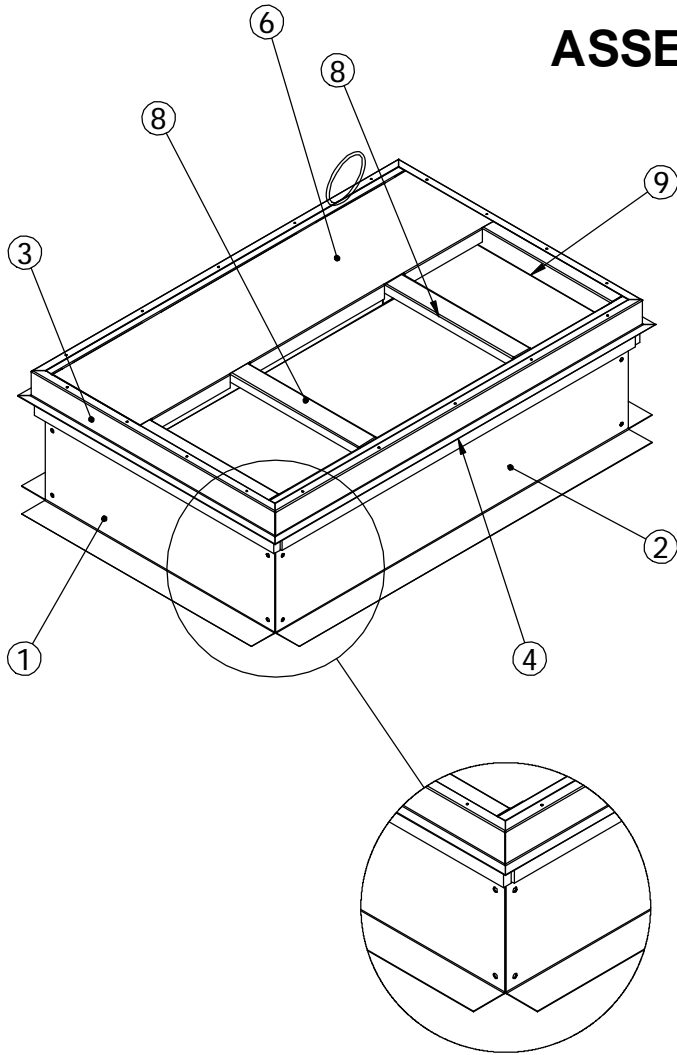


# ROOF CURB ASSEMBLY INSTRUCTIONS EMS# 1014891



CARRIER CPRFCURB011A00

---

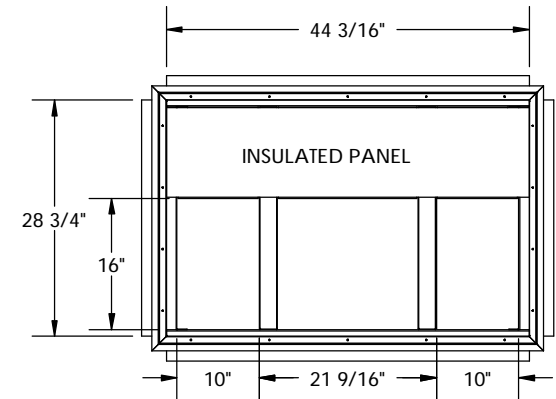
NUMBER  
1014891

Drawn By: RTO  
Drawn Date: 9/25/09

REV:

**ESTIMATED WEIGHT: LBS. 67.54**

NOTE: ROOF CURB IS FULLY INSULATED



**NOTES: STEP-BY-STEP ASSEMBLY INSTRUCTIONS**

1. ARRANGE SIDES AND ENDS TOGETHER AT RIGHT ANGLES AS SHOWN. SEE DETAIL A.
2. BOLT SIDES AND ENDS TOGETHER AS SHOWN USING THE 4 CORNER BRACKETS, BOLTS, AND THE TEK SCREWS PROVIDED. SEE. DETAIL A.
3. PUT 10-16 X 3/4" TEK SCREWS IN PROVIDED PILOT HOLES IN SIDES AND ENDS AS NECESSARY. INSERT SLOTTED ENDS OF DUCT SUPPORTS OVER SCREWS AND TIGHTEN IF NECESSARY. REPEAT AT ALL DUCT SUPPORT LOCATIONS. SEE DETAIL B.
4. WHEN INSULATED PANELS ARE INCLUDED PLACE THE INSULATED PANELS TOGETHER WITH FORMED FLANGES FACING DOWN ALLOWING FLANGED PORTION OF PANELS TO REST ON SIDE RAILS. (GASKET WILL HOLD PANELS IN PLACE.) SEE DETAIL C.
5. REMOVE PAPER BACKING FROM THE PROVIDED GASKETING AND APPLY TO TOP PERIMETER OF ROOF CURB AND DUCT SUPPORTS. (SEE ILLUSTRATION ABOVE). SET CURB IN PLACE OVER ROOF OPENING. LEVEL CURB AND SECURE TO ROOF. SEE DETAIL D.
6. **IMPORTANT: THE GASKETING OF THE UNIT TO THE ROOF CURB IS CRITICAL FOR WATER TIGHTNESS. INSTALL GASKET SUPPLIED WITH ROOF CURB AS SHOWN IN DETAIL D, & NOTE 5. IMPROPERLY APPLIED GASKET CAN RESULT IN AIR LEAKS AND POOR UNIT PERFORMANCE.**

13	WOOD SIDE .75 X 3 X 44.188	2
12	WOOD END .75 X 3 X 30	2
11	Gasket, NEO, 1/4 X 3/4 X 16'	2
10	HARDWARE BAG	1
9	DUCT SUPPORT	2
8	DUCT SUPPORT	2
7	DUCT SUPPORT	2
6	INSULATED PANEL	1
5	CORNER CLIP	4
4	LAYOVER LONG	2
3	LAYOVER SHORT	2
2	RAIL SIDE	2
1	RAIL END	2
ITEM NO.	DESCRIPTION	QTY.

© 2007 COX ENGINEERING COMPANY  
DBA CAMBRIDGEPORT AIR SYSTEMS. ALL RIGHTS RESERVED™

## Cambridgeport™ AIR SYSTEMS, INC.

SALISBURY, MA 01952  
PHONE 1-800-648-2872 FAX 1978-462-9189