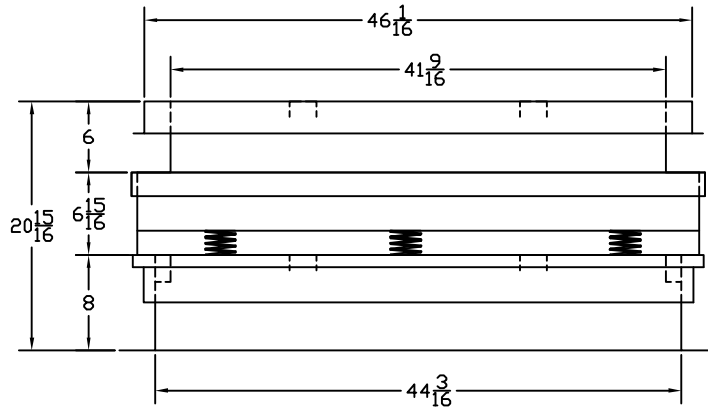
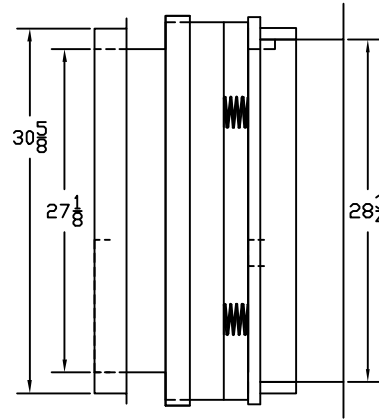
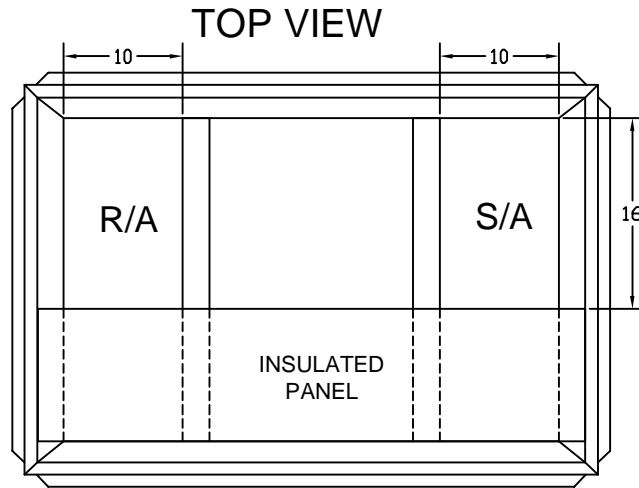


# SUBMITTAL

REVISIONS					
REV	ECN #	DESCRIPTION	APP	CHKD	DATE

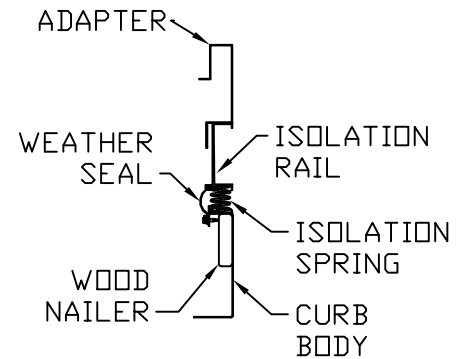


RIGHT VIEW

FRONT VIEW

Approved: \_\_\_\_\_

Date: \_\_\_\_\_



FEATURES:

1. CURB AND ISOLATION RAIL SHIPPED FULLY ASSEMBLED
2. ISOLATION RAIL FABRICATED OF ALUMINUM EXTRUSION
3. CURB FABRICATED OF HEAVY GAUGE GALVANIZED STEEL
4. MITERED TOP CORNERS
5. FULL PERIMETER WOOD NAILER
6. FULL PERIMETER WEATHER SEAL
7. DUCT SUPPORT INCLUDED
8. CANVAS DUCT NOT INCLUDED

CPRFCURB011A00  
1" OR 2" DEFLECTION  
SPECIAL NOTES

ESTIMATED WEIGHT 130 LBS

<b>Cambridgeport™</b> 1-800-648-2872			
HVAC Accessories & Engineered Systems			
DESCRIPTION		CURB, ISOLATION	
		SUBMITTAL	
CUSTOMER/JOB NAME			
JOB#		DATE	
SCALE		PAGE	
DRAWN BY		DWG #	
CHECKED BY		(EMS #)	

THE INFORMATION CONTAINED IN THIS DOCUMENT IS PROPRIETARY TO CAMBRIDGEPORT AIR SYSTEMS. THIS DOCUMENT MAY NOT BE ISSUED TO ANOTHER PARTY WITHOUT PRIOR WRITTEN CONSENT AND AUTHORIZATION. \* CAMBRIDGEPORT\* AND THE CAMBRIDGEPORT LOGO ARE REGISTERED TRADEMARKS OF CAMBRIDGEPORT AIR SYSTEMS. ALL RIGHTS RESERVED.

TOLERANCES DECIMALS: .000 = +/- .063, .00 = +/- .063, 0 = +/- .063 ANGLES: +/- 1 DEG FRACTIONS: +/- 1/16"