

DATE: \_\_\_\_\_

COMPANY: \_\_\_\_\_

JOB NAME: \_\_\_\_\_

SUBMITTED BY: \_\_\_\_\_

NOTES: \_\_\_\_\_

\_\_\_\_\_

ROOF CURB

SUBMITTAL #1017913

RENEWAIRE HE2X-16

CURB ASSEMBLY NUMBER

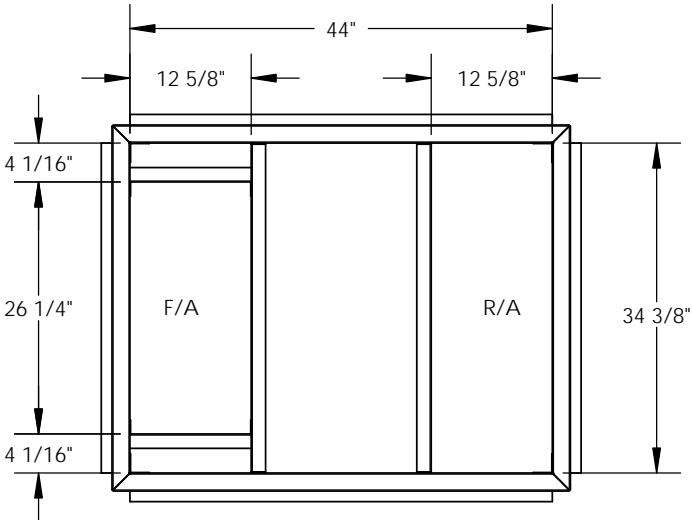
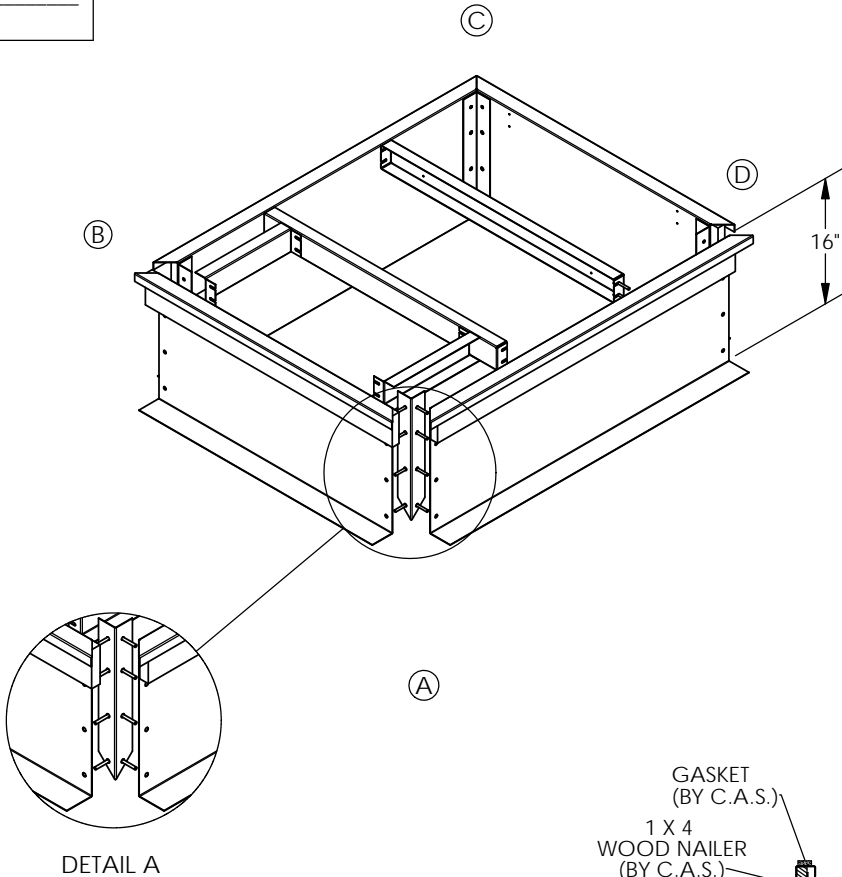
1017913

REV:

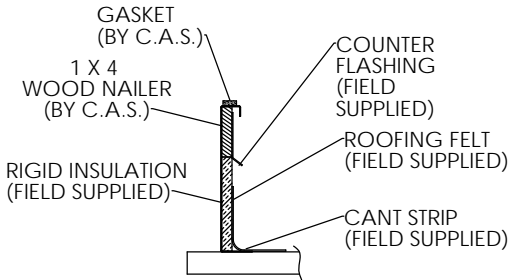
Drawn By: RTO

Drawn Date: 6/24/11

ESTIMATED WEIGHT: 70 LBS.



DETAIL A



SECTION E-E  
TYPICAL INSTALLED  
CURB SECTION

ROOF CURB IS LABELED WITH RTU# IF APPLICABLE

- FEATURES:
- MITERED TOP CORNERS
- ROOF CURB BODY IS FABRICATED OF HEAVY GAUGE GALVANIZED STEEL.
- FULL PERIMETER WOOD NAILER.
- PRE-PUNCHED ASSEMBLY HOLES AND HARDWARE INCLUDED FOR DUCT SUPPORT INSTALLATION,
- ROOF CURB IS SHIPPED KNOCKED DOWN.
- ROOF CURB IS FULLY INSULATED.

| RTU# | HEIGHT OF CORNER A | HEIGHT OF CORNER B | HEIGHT OF CORNER C | HEIGHT OF CORNER D |
|------|--------------------|--------------------|--------------------|--------------------|
|      | 16"                | 16"                | 16"                | 16"                |

Cambridgeport

AIR SYSTEMS, INC.

SALISBURY, MA 01952

PHONE 1-800-648-2872 FAX 1978-462-9189