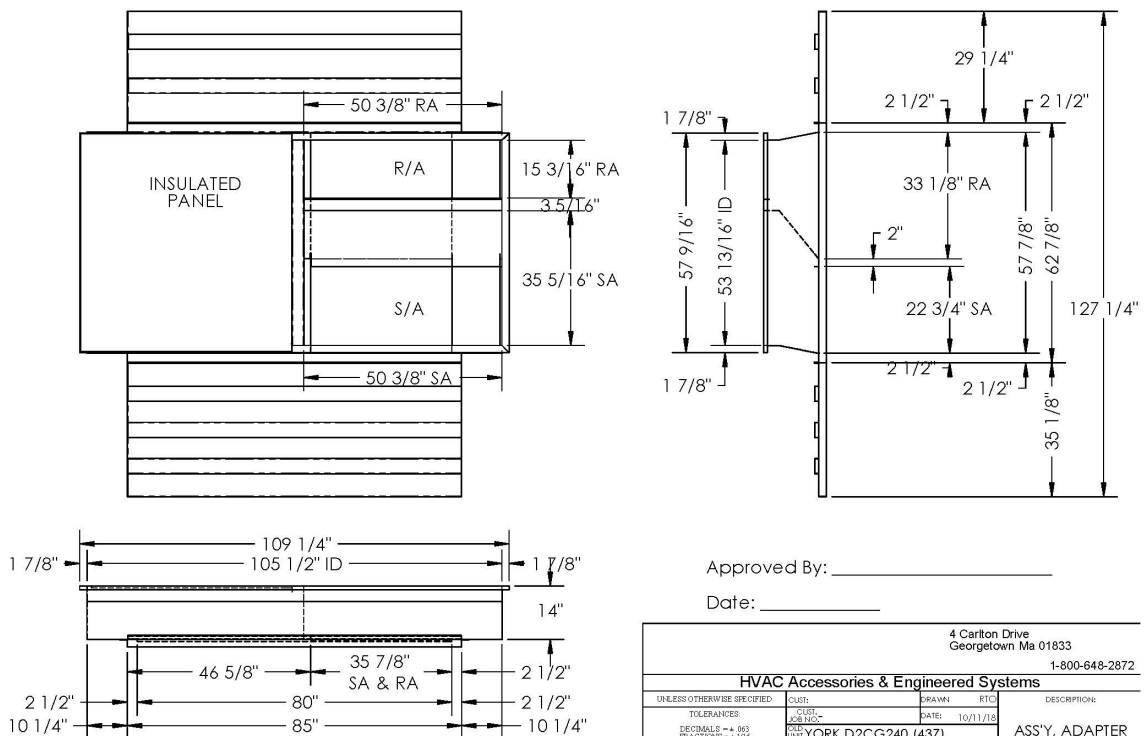


Cambridgeport

SUBMITTAL

Part Number
2015226

SUBMITTED TO _____
COMPANY _____
JOB NAME _____
EQUIPMENT _____
SIGNATURE _____
DATE _____



MATERIAL: 18GA,(0.0516) 340.5 LBS.

FEATURES

- ONE PIECE WELDED CONSTRUCTION
- FACTORY INSTALLED SUPPLY TRANSITIONS
- FULLY INSULATED
- DESIGNED FOR EVEN WEIGHT DISTRIBUTION
- FABRICATED OF HEAVY GAUGE G90 GALVANIZED STEEL
- ALL WELDS SPRAYED WITH GALVANIZING COMPOUND
- GASKET PROVIDED FOR UNIT TO ADAPTER SEALING

Approved By: _____

Date: _____

4 Carlton Drive Georgetown Ma 01833 1-800-648-2872			
HVAC Accessories & Engineered Systems			
UNLESS OTHERWISE SPECIFIED:	CUST. JOB NO.	DRAWN	DATE
TOLERANCES:	DECIMALS = ± .003	YORK D2CG240 (437)	10/11/18
FRACTORS = ± .016	NEW CARRIER 48TCED16 (74A)	ASS'Y, ADAPTER	
ANGLES = ± 1°	SUBMITTAL 45894		
MATERIAL CONDITIONS:	REMOVE ALL BURRS & SHARP EDGES	DETAIL OF	PART NO.
ALL DIMENSIONS ARE O.D.	2015226	SHEET 1 OF 1	2015226

CAMBRIDGEPORT STRONGLY RECOMMENDS CONFIRMING THE DIMENSIONS ON THIS SUBMITTAL

CURB ADAPTERS ARE BASED ON UNIT MANUFACTURERS STANDARD CURB DIMENSIONS.
CAMBRIDGEPORT CANNOT BE RESPONSIBLE FOR ANY DEVIATIONS FROM FACTORY DIMENSIONS OR INCORRECT MODEL NUMBERS.