

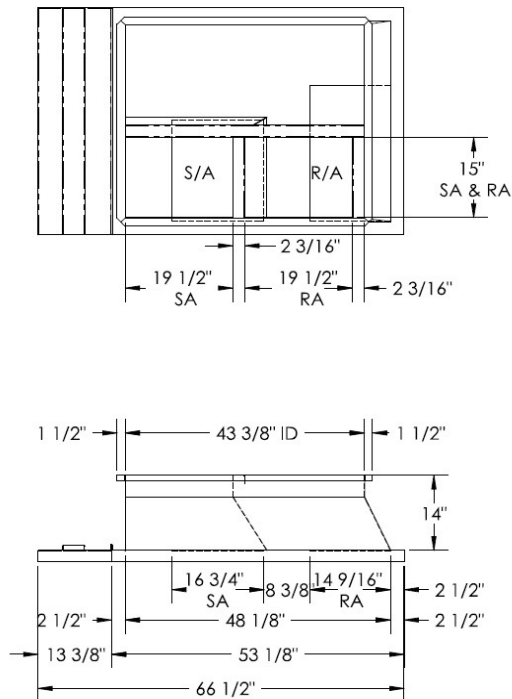
SUBMITTAL

Part Number
2016717

SUBMITTED TO _____
COMPANY _____
JOB NAME _____
EQUIPMENT _____
SIGNATURE _____
DATE _____

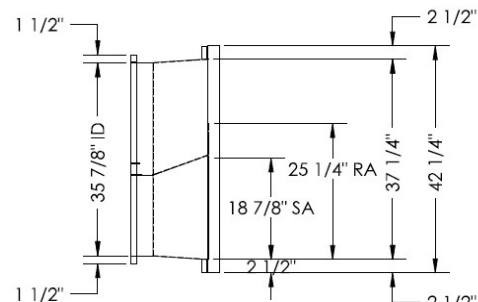
© 2019 COX ENGINEERING DBA CAMBRIDGEPORT AIR SYSTEMS.
THE INFORMATION CONTAINED IN THIS DOCUMENT IS PROPRIETARY TO
COX ENGINEERING COMPANY DBA CAMBRIDGEPORT AIR SYSTEMS.
THIS DOCUMENT OR THE INFORMATION CONTAINED IN WHOLE OR IN PART
MAY NOT BE ISSUED TO ANOTHER PARTY WITHOUT WRITTEN CONSENT AND
AUTHORIZATION FROM CAMBRIDGEPORT.

SUBMITTAL



MATERIAL: 18GA.(0.0516) 98.3 LBS.

REVISIONS			
ZONE	REV.	DESCRIPTION	DATE



FEATURES:

- ONE PIECE WELDED CONSTRUCTION
- CURB ADAPTER MADE OF HEAVY GAUGE GALVANIZED STEEL.
- ALL WELDS ARE COATED WITH A GALVANIZED COMPOUND.
- GASKETING IS PROVIDED FOR UNIT TO CURB ADAPTER SEALING.
- CURB ADAPTER IS FULLY INSULATED.
- SUPPLY TRANSITION AND RETURN PLENUM INCLUDED.
- BLANK-OFF PANEL SHIPPED LOOSE FOR FIELD INSTALLATION.

Approved By: _____

Date: _____

Cambridgeport			
HVAC Accessories & Engineered Systems			
UNLESS OTHERWISE SPECIFIED:	CUST. G TORRICE	DRAWN: RTC	DESCRIPTION:
TOLERANCES:	DECIMALS - ± .003	DATE: 12/28/20	ASS'Y, ADAPTER
DECIMALS - ± .003	FRACTIONS - ± 1/16		
ANGLES - ± 1°			
MATERIAL CONDITIONS:	REMOVE ALL BURRS & SHARP EDGES		
ALL DIMENSIONS ARE O.D.	DETAIL OF: 2016717	SHEET 1 OF 1	PART NO. 2016717

FEATURES

- ONE PIECE WELDED CONSTRUCTION
- FACTORY INSTALLED SUPPLY TRANSITIONS
- FULLY INSULATED
- DESIGNED FOR EVEN WEIGHT DISTRIBUTION
- FABRICATED OF HEAVY GAUGE G90 GALVANIZED STEEL
- ALL WELDS SPRAYED WITH GALVANIZING COMPOUND
- GASKET PROVIDED FOR UNIT TO ADAPTER SEALING

CAMBRIDGEPORT STRONGLY RECOMMENDS CONFIRMING THE DIMENSIONS ON THIS SUBMITTAL

CURB ADAPTERS ARE BASED ON UNIT MANUFACTURERS STANDARD CURB DIMENSIONS.
CAMBRIDGEPORT CANNOT BE RESPONSIBLE FOR ANY DEVIATIONS FROM FACTORY DIMENSIONS OR INCORRECT MODEL NUMBERS.