

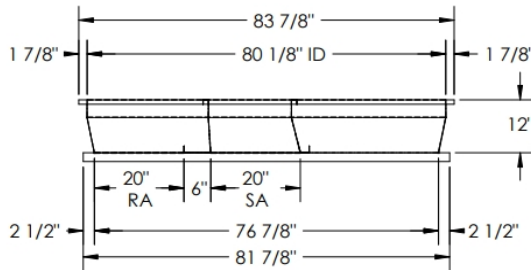
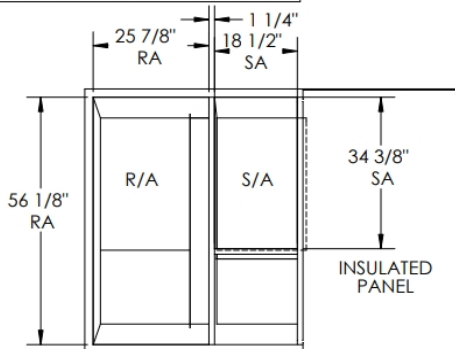
SUBMITTAL

Part Number
2017671

SUBMITTED TO _____
COMPANY _____
JOB NAME _____
EQUIPMENT _____
SIGNATURE _____
DATE _____

© 2018 COX ENGINEERING DBA CAMBRIDGEPORT AIR SYSTEMS.
THE INFORMATION CONTAINED IN THIS DOCUMENT IS PROPRIETARY TO
COX ENGINEERING COMPANY DBA CAMBRIDGEPORT AIR SYSTEMS.
THIS DOCUMENT OR THE INFORMATION CONTAINED IN WHOLE OR IN PART
MAY NOT BE ISSUED TO ANOTHER PARTY WITHOUT WRITTEN CONSENT AND
AUTHORIZATION FROM CAMBRIDGEPORT.

SUBMITTAL

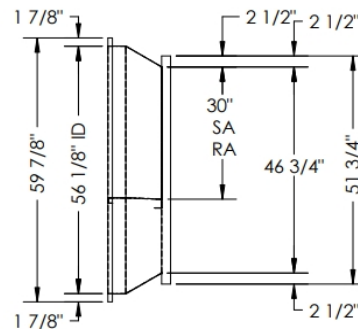


Approved By: _____

Date: _____

MATERIAL: 18GA.(0.0516) 146.3 LBS.

REVISIONS			
ZONE	REV.	DESCRIPTION	DATE
APPROVED			



FEATURES:

1. ONE PIECE WELDED CONSTRUCTION
2. CURB ADAPTER MADE OF HEAVY GAUGE GALVANIZED STEEL.
3. ALL WELDS ARE COATED WITH A GALVANIZED COMPOUND.
4. GASKETING IS PROVIDED FOR UNIT TO CURB ADAPTER SEALING.
5. CURB ADAPTER IS FULLY INSULATED.
6. SUPPLY TRANSITION AND RETURN PLENUM INCLUDED.

Cambridgeport

4 CARLETON DRIVE
GEORGETOWN, MA 01833
1-800-648-CURB(2872)
1-978-465-8481

HVAC Accessories & Engineered Systems

UNLESS OTHERWISE SPECIFIED	CUST. D.C.N.E.	DRAWN RTO	DESCRIPTION:
TOLERANCES:	JOB NO. -	DATE: 05/03/22	ASS'Y, ADAPTER
DECIMALS - ± .003	NEW YORK DH078 (471)		
FRACTIONS - ± 1/16	NEWTRANE YHC120F (044)		
ANGLES - ± 1°			
MATERIAL CONDITIONS:	SUBMITTAL 2017671		
REMOVE ALL BURS & SHARP EDGES	DETAIL OF 2017671		
ALL DIMENSIONS ARE O.D.	SHEET 1 OF 1		
		PART NO. 2017671	REV.

FEATURES

- ONE PIECE WELDED CONSTRUCTION
- FACTORY INSTALLED SUPPLY TRANSITIONS
- FULLY INSULATED
- DESIGNED FOR EVEN WEIGHT DISTRIBUTION
- FABRICATED OF HEAVY GAUGE G90 GALVANIZED STEEL
- ALL WELDS SPRAYED WITH GALVANIZING COMPOUND
- GASKET PROVIDED FOR UNIT TO ADAPTER SEALING

CAMBRIDGEPORT STRONGLY RECOMMENDS CONFIRMING THE DIMENSIONS ON THIS SUBMITTAL

CURB ADAPTERS ARE BASED ON UNIT MANUFACTURERS STANDARD CURB DIMENSIONS.
CAMBRIDGEPORT CANNOT BE RESPONSIBLE FOR ANY DEVIATIONS FROM FACTORY DIMENSIONS OR INCORRECT MODEL NUMBERS.